



June 22, 2018

The Honorable Elaine L. Chao
Secretary of Transportation
US Department of Transportation
1200 New Jersey Ave, SE
Washington, DC 20590

Randy Moore
President
5201 Grand Avenue.
Davenport, IA 52807
Randy.Moore@amwater.com
P 563.468.9218
F 563-322-4325

RE: Support for the City of Clinton's Drive to Prosperity: Manufacturing Drive/Bluff Blvd Reconstruction BUILD Grant Application

Dear Secretary Chao:

Iowa American Water fully supports the City of Clinton's BUILD Grant application for reconstruction of Manufacturing Drive/Bluff Boulevard from Valley West Drive to 7th Avenue North.

Iowa American Water routinely partners with the City of Clinton to replace aging water infrastructure during City street reconstruction projects. These partnering projects allow us to gain cost and time efficiencies and provide the least amount of disturbance to residents and businesses that we serve. In addition to numerous residential City street projects, we have also collaborated on highway and major corridor projects such as Liberty/Camanche Avenue (Highway 30) and 19th Avenue North.

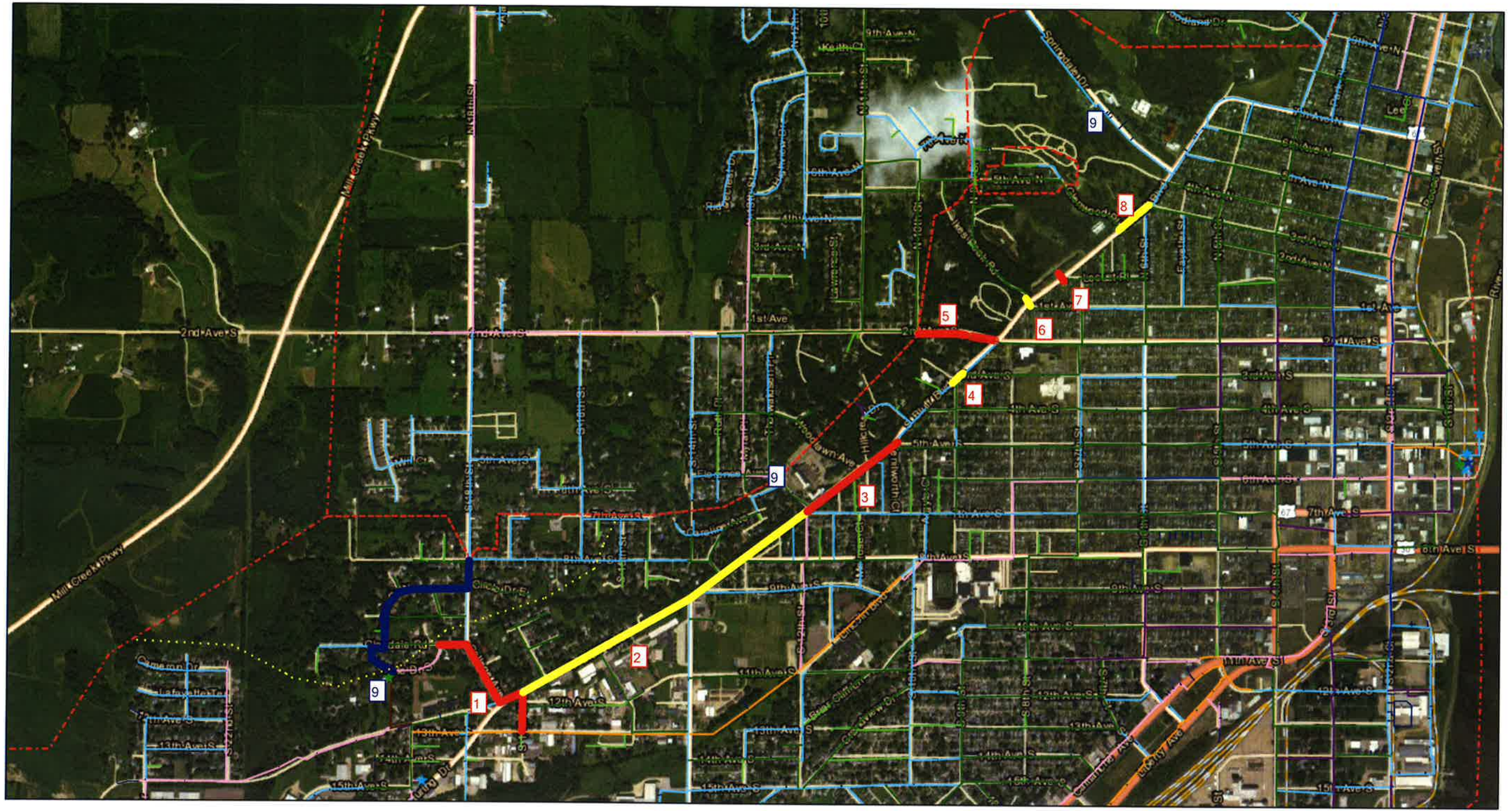
The Manufacturing Drive/Bluff Boulevard project allows us a unique opportunity to replace aging infrastructure in a highly congested corridor of our service system in a safe and coordinated manner. Much of the water mains and service lines in this corridor of the system are 100 years old. Frequent breaks on these lines contribute to the already congested nature of this street. In addition to the water infrastructure directly within the Bluff Boulevard right of way, Iowa American Water has elevated storage and two booster stations that will indirectly be affected by the Bluff Boulevard project. Upgrade of these facilities would also be planned during the work in this area.

Attached is a preliminary plan, which depicts the location of proposed water projects that will directly benefit by partnering with the City for completion during the Bluff Boulevard reconstruction project. Total estimated cost of these improvements is nearly \$2.9M. These projects include replacement of over two miles of water main and replacement of two aged booster stations with a new pump station. These improvements will significantly improve pressure and service reliability in a critical area of Iowa American Water's service area for the City of Clinton.

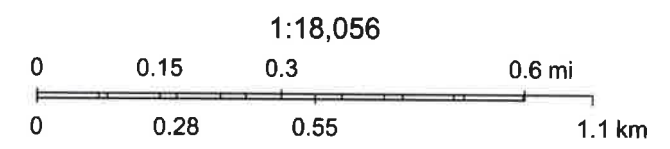
Iowa American Water is excited about the opportunity to collaborate with the City on this critical project for the benefit of the entire Clinton community.

Sincerely,

Randy Moore
President Iowa American Water



Iowa American Water
Bluff Boulevard Preliminary Plan 6-15-18



**Iowa American Water - Clinton District
Bluff Blvd Improvement Plan
6/14/2018**

1	College Avenue Secondary Feed to Bluff Tank - College Avenue from Bluff to Circle Drive - Replace 1100 lf of 6" CI Main (1919) with 12" DI - Bluff Blvd from College to S 19th - Replace 260 lf of 8" CI Main (1919) with 12" DI - S. 17th from Bluff to 13th Ave S - Replace 200 lf of 6" CI (1957) and extend additional 250 lf of 12" DI to connect to 16" main	\$407,250
2	Bluff Blvd from S 17th to 7th Ave S - Replace 4000 lf of 6" CI (1919) with 8" DI	\$800,000
3	Bluff Blvd from 7th Ave S to 5th Ave S - Replace 1300 lf of 6" CI (1919) with 8" DI	\$260,000
4	2nd Ave S from S 10th to Bluff - Replace 600 lf of 6" CI (1961) east of S 10th - Abandon 400 lf of 6" CI (1961) west of Bluff	\$135,000
5	Bluff Blvd from S 9th to 3rd Ave S - Replace 160 lf of 6" CI (1919) with 8" DI	\$32,000
6	Bluff Blvd and Ike's Peak Road - Replace 80 lf of 6" CI (1964) at Ike's Peak crossing Bluff Blvd	\$20,000
7	202 Bluff Apartment Service - Replace 2" service to apartments with addition of 8" main crossing Bluff Blvd and hydrant	\$20,000
8	Bluff Blvd from Glenwood Place to 3rd Ave N - Replace 400 lf of 6" CI (1919) with 8" DI	\$80,000
9	New Bluff Booster Station - Abandon 50 year old underground Springdale Booster Station - Abandon 60 year old Rock Creek Booster Station - Construct new above grade booster station with generator at Bluff Tank - Replace 2300 lf of 2", 6", and 8" main from 8th Avenue South to Bluff Tank Booster with 12" DI - Extend High Pressure Zone to discharge of new booster station	\$1,117,500
Project Total		\$2,871,750